

TEPA KNOB

ARCHITECTURAL SPECIFICATIONS



PART NUMBER:
TEPA-KNOB-SN

STANDARD FINISH:
SATIN NICKEL



PART NUMBER:
TEPA-KNOB-MB

PREMIUM FINISH:
MATTE BLACK
MUNSELL N2/



PART NUMBER:
TEPA-KNOB-MW

PREMIUM FINISH:
MATTE WHITE
MUNSELL N9/



PART NUMBER:
TEPA-KNOB-SG

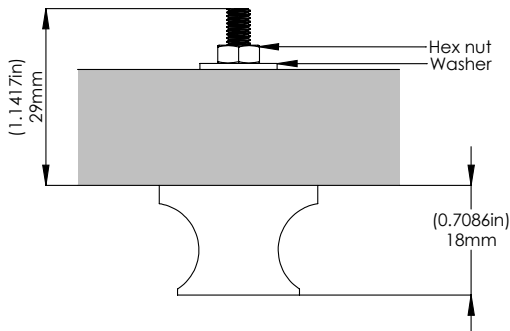
PREMIUM FINISH:
SATIN GOLD
PANTONE #871C

10% color discrepancy, and custom pricing options apply.

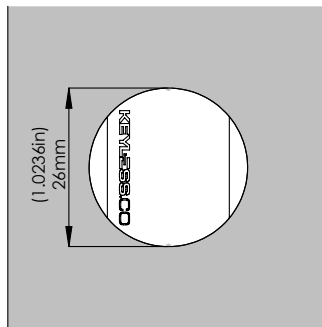
- Material: Zinc Alloy 5
- Fits door thickness minimum 1mm and maximum 25mm
- IP69K - Complete dust and water resistance

- When disinfecting, mist with liquid that is at least 70% alcohol solution in order to maintain product integrity
- Ergonomic non-slip grip

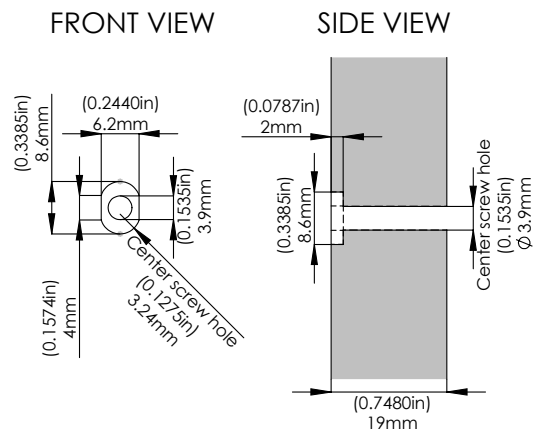
TOP VIEW



FRONT VIEW



DOOR ROUTING



Manufactured By:

KEYLESS.CO

1825 W. Walnut Hill Ln., Suite 102, Irving, TX 75038, USA | +1 972-331-2770 | info@keyless.co | www.keyless.co | V: 12/8/2020