

KEYLESSH3

THE SIMPLE HASP

✓ SIMPLE ✓ SUSTAINABLE ✓ SECURE

SIMPLY PERFECT. PERFECTLY SIMPLE.

SIMPLE to install and operate, our hasp lock is perfect for assigned or shared use in wet or dry areas.

SUSTAINABLE with a solid metal design and no batteries, wires, or harmful waste these locks qualify for two LEEDV4 credits.

SECURE with an integrated rotation system, the hasp will not engage cylinder while a padlock is present; preventing forced entry or tampering.



OUR CLIENTS



Mercedes-Benz



KEYLESSH3

ARCHITECTURAL SPECIFICATIONS



PART NUMBER:
KEYLESSH3-SN
KEYLESSH3-SN-ADA

STANDARD FINISH:
Satin Nickel

FINISHING PROCESS:
Electroplating



PART NUMBER:
KEYLESSH3-MB
KEYLESSH3-MB-ADA

PREMIUM FINISH:
Matte Black/Munsell N2

FINISHING PROCESS:
Electrodeposition coating



PART NUMBER:
KEYLESSH3-MW
KEYLESSH3-MW-ADA

PREMIUM FINISH:
Matte White/Munsell N9

FINISHING PROCESS:
Epoxy painting



PART NUMBER:
KEYLESSH3-SG
KEYLESSH3-SG-ADA

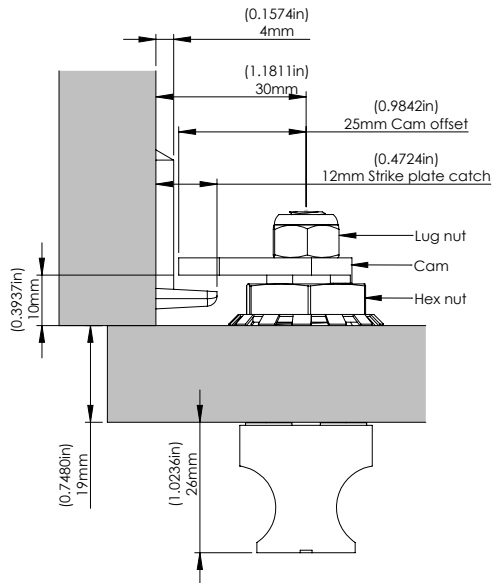
PREMIUM FINISH: Satin
Gold Pantone #871C

FINISHING PROCESS:
Epoxy painting

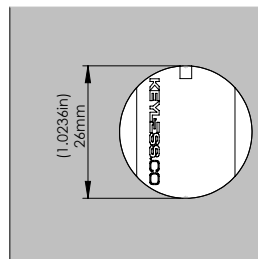
10% color discrepancy, and custom pricing options apply.

- Compatible with wood, glass, plastic, phenolic & metal locker doors
- Anti-pick and tamper resistant
- Lock is designed with an integrated rotation system. With the presence of a padlock the lock will remain locked, continuously spinning to avoid forced entry and tampering
- Ergonomic non-slip grip with a one step twist-and-pull operation
- The hasp accepts padlock shackles between 4mm to 8mm thick
- IP69K - Complete dust and water resistance
- Strong 100% metal for long-term heavy-use - no plastic components
- Accommodates doors 1-19mm thickness
- Standard cam offset 25mm (additional cam offsets available)
- When disinfecting, mist with liquid that is at least 70% alcohol solution in order to maintain product integrity
- Immediate live response during business hours - no run around**
(sos@keyless.co or 972.331.2770)

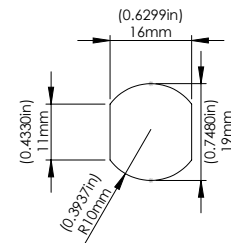
TOP VIEW



FRONT VIEW



DOOR ROUTING



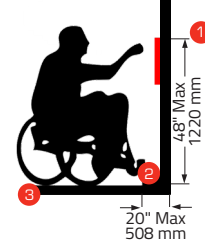
2010 & 2012 ADA STANDARDS FOR ACCESSIBLE DESIGN REQUIREMENTS



- 5% of lockers and their operable parts, the locks, must meet ADA specifications.
- Locks shall be operable with one hand.
- Shall not require tight grasping, pinching, or twisting of the wrist to operate.
- Shall have a force required to activate of 5lbs (22.2N) maximum.
- Locks shall be installed maximum 48.00"/1220mm from the floor surface.

ADA MODEL WITH INTEGRATED LEVER SERVING AS A PULL

Meets the 2010 and 2012 Standards for Accessible Design



- 1 Highest touch point
- 2 Front Edge of block
- 3 Top of finished floor

Manufactured By:

KEYLESS.CO

1825 W. Walnut Hill Ln., Suite 102, Irving, TX 75038, USA | +1 972-331-2770 | info@keyless.co | www.keyless.co | V: 3/18/21

KEYLESSH3

USER INSTRUCTIONS

TO LOCK

- Close the door.
- Turn the knob to the vertical position.
- Insert the padlock and secure.

TO UNLOCK

- Remove the padlock.
- Turn the knob back to the horizontal position.
- Open the door.

CLICK LINK:

<https://www.keyless.co/keylessH3/instructions/user/>

**SCAN QR CODE
TO VIEW USER
INSTRUCTION VIDEO:**

