

# KEYLESSH3HASP

THE PERFECT LOCK

✓ SIMPLE ✓ SUSTAINABLE ✓ SECURE

## SIMPLY PERFECT. PERFECTLY SIMPLE.

**SIMPLE** to install and operate, our hasp lock is perfect for assigned or shared use in wet or dry areas.

**SUSTAINABLE** with a solid metal design and no batteries, wires, or harmful waste these locks qualify for two LEEDV4 credits.

**SECURE** with an integrated rotation system, the hasp will not engage cylinder while a padlock is present; preventing forced entry or tampering.

## OUR CLIENTS



amazon

BOEING

Capital One



Coca-Cola



EQUINOX

facebook



Google

HYATT



LIFETIME  
FITNESS



Mercedes-Benz



PEPSICO



REBEL



VISA

KEYLESS.CO

1825 W. Walnut Hill Ln., Suite 102, Irving, TX 75038, USA | +1 972-331-2770 | info@keyless.co | www.keyless.co

# KEYLESSH3HASP INSTRUCTIONS

## USER INSTRUCTIONS



SEE DEMONSTRATION  
VIDEO

## TO LOCK

- Close the door.
- Turn the knob to the vertical position.
- Insert the padlock and secure.

## TO UNLOCK

- Remove the padlock.
- Turn the knob back to the horizontal position.
- Open the door.

The hasp accepts padlock shackles between 4mm/.1574" to 8mm/.3149" thick.

# KEYLESSH3HASP FINISH OPTIONS

10% color discrepancy, and custom pricing options apply.



MODEL:

**KEYLESSH3-SN**

SATIN NICKEL  
STANDARD FINISH



MODEL:

**KEYLESSH3-MB**

MATTE BLACK  
PREMIUM FINISH



MODEL:

**KEYLESSH3-MW**

MATTE WHITE  
PREMIUM FINISH



MODEL:

**KEYLESSH3-SG**

SATIN GOLD  
PREMIUM FINISH

# KEYLESSH3HASP ARCHITECTURAL SPECIFICATIONS

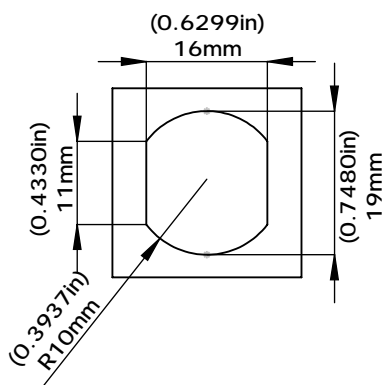


MODEL:  
**KEYLESSH3**  
SATIN NICKEL

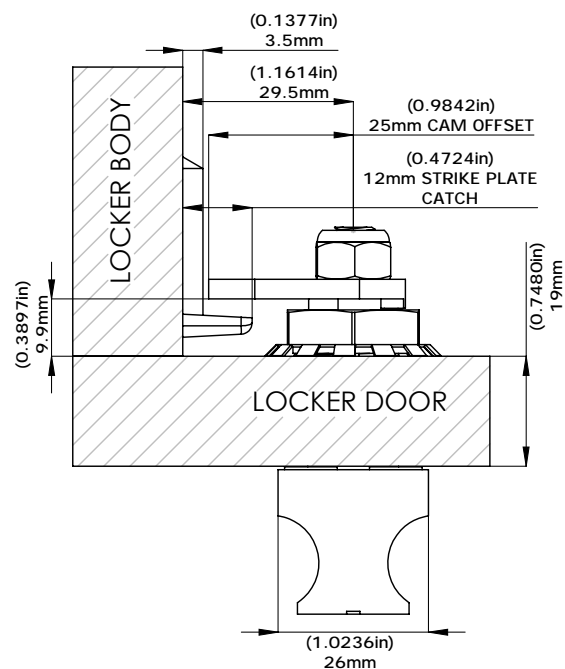
## SPECIFICATIONS

- Shared (temporary) or assigned (permanent) use
- Compatible with wood, glass, plastic, phenolic & metal locker doors
- Zero operating expenses - No batteries or wires
- LEED V4 certified - adds 2 LEED credits
- 1-year comprehensive warranty
- Anti-pick and tamper resistant
- Lock is designed with an integrated rotation system. With the presence of a padlock the lock will remain locked, continuously spinning to avoid forced entry and tampering.
- Ergonomic non-slip grip with a one step twist-and-pull operation.
- The hasp accepts padlock shackles between 4mm to 8mm thick.
- IP69K - Complete dust and water resistance
- Strong 100% metal for long-term heavy-use - no plastic components
- Accommodates doors 1-19mm thickness
- Satin Nickel Finish
- Standard cam offset 25mm (additional cam offsets available).
- **Immediate live response during business hours - no run around.** (sos@keyless.co or 972.331.2770)

### LOCK ROUTING



### TOP VIEW 1-19mm THICK DOOR



Manufactured By:

**KEYLESS.CO**

1825 W. Walnut Hill Ln., Suite 102, Irving, TX 75038, USA | +1 972-331-2770 | info@keyless.co | www.keyless.co